

The PT 155 OIL model is motorised with a 5.5 kW three-phase side channel turbine in series, with high head, ideal for suctioning heavy materials with a high specific weight. This is an extremely professional and practical instrument, stands out from the rest by unique features in the suction of oils and swarf as it is able to separate the liquid part from the solid part thanks to a stainless steel grid basket, carrying out a macro filtration of the materials. The models proposed for this type of application are equipped with an automatic liquid stop system, allowing the vacuum cleaner to be switched off at the maximum level of liquid reached. Emptying suctioned liquids is simple, efficient and very fast thanks to Coyncó's reverse flow system, which uses the air produced by the turbine.

TECHNICAL FEATURES **OILLINE PRO**

MODELS PTP 155 OIL PTS 155 OIL

MOTORIZATION	Turbine	Turbine
POWER	5,5 kW	5,5 kW
VOLTAGE	400 V	400 V
FREQUENCY	50 Hz	50 Hz
AMPERAGE	10,4 A	6,7 A
AIR FLOW	520 m³/h	320 m³/h
DEPRESSION	250 mBar	450 mBar
MAX DEPRESSION	320 mBar	530 mBar
NOZZLE DIAMETER	Tangential Ø 60 mm	Tangential Ø 60 mm
BODY DIAMETER	Ø 460 mm	Ø 460 mm
DIMENSIONS	112x60h135	112x60h135
WEIGHT	151 Kg	151 Kg

FILTER SYSTEM PTP 155 OIL PTS 155 OIL

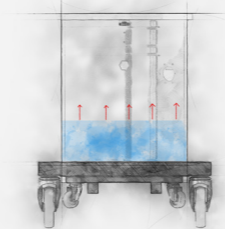
TYPE OF FILTER	Cartridge	Cartridge
PRIMARY FILTER - SURFACE	13.000 cm²	13.000 cm²
FILTER MEDIA	M Conductive	M Conductive
SECONDARY FILTER	NO	NO
FILTER CLEANING	Semi automatic Pneumatic piston	Semi automatic Pneumatic piston

COLLECTION SYSTEM PTP 155 OIL PTS 155 OIL

CAPACITY	Barrel 100l	Barrel 100l
LIQUID STOP	Automatic shutdown	Automatic shutdown
LIQUID EMPTYING	Flow reversal	Flow reversal



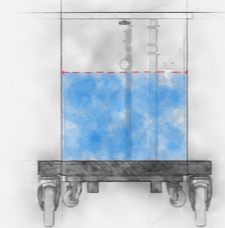
The added advantage is that you don't necessarily have to change the machine configuration from powder to liquid mode thanks to the installed filter protection. The installed filter protection that filter protection that prevents the filter from getting wet.



Suction

1

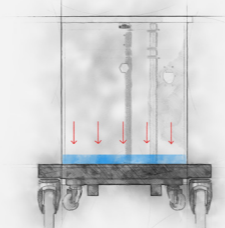
The liquid residue, separated from the solid residue, is deposited on the bottom of the drum, rising in level during suction.



Shutdown

2

When the accumulation limit is reached, the liquid comes into contact with the float, switching off the machine.



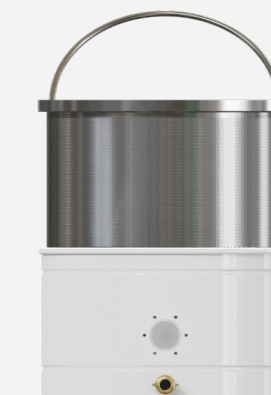
Reversal

3

Acting on the lever, the turbine turns on, reversing the air flow and emptying the container.

Stainless steel available

Entrance tangential with valve Clapet, without of mechanisms subject to lockable.



Electric float sensor

Chip separator bucket

